



**45th Annual
BUZZARDS BAY REGATTA
SAILING INSTRUCTIONS
August 3, 4, and 5, 2018**

Hosts: Beverly Yacht Club ("BYC"), Marion, MA and
New Bedford Yacht Club ("NBYC"), South Dartmouth, MA

Racing Venue: Buzzards Bay

1.0 RULES

- 1.1 The regatta will be governed by the *rules* as defined in the current *Racing Rules of Sailing (RRS)*.
- 1.2 The PHRF and NEMA Multihull classes will be required to comply with the current *US Sailing Safety Equipment Requirements for Near Shore Racing*.
- 1.3 No weight limit will be enforced for PHRF classes. All PHRF boats will be required to comply with the following Reference Crew Numbers.

LOA (up to)	Crew Number	LOA (up to)	Crew Number
22.5	4	42.5	12
25	5	45	13
27.5	6	50	14
30	7	55	15
32.5	8	60	16
35	9	65	17
37.5	10	70	18

- 1.4 The following documents also govern the regatta: Supplement A to the Laser Sailing Instructions; Supplement B to the Bullseye Sailing Instructions; Supplement C to the PHRF, NEMA Multihulls and F18 classes Sailing Instructions; Attachment D for the Dick Fontaine Memorial Distance Race; and Attachments 1-4.
- 1.5 RRS 52 is changed as follows: Powered winches will be allowed on all PHRF boats.
- 1.6 RRS 61.1 is changed to require Bullseyes and H12's to display a protest flag if they are protesting.
- 1.7 Boats that race before completing the entry procedures described in the Notice of Race will be scored "Did Not Compete" without a hearing for such races. This changes RRS 63.1, A4.1 and A5.
- 1.8 A boat racing with any sail number different from the number on her entry form (or sail number change form) will be scored "Did Not Compete" without a hearing. This changes RRS 63.1, A4.1, A5 and G4.
- 1.9 All boats except Lasers, 505's and kiteboards are required to carry a VHF radio for use in emergencies.

2.0 NOTICES TO COMPETITORS

- 2.1 Notices to Competitors will be posted on the official notice board located under the tent in front of the BYC clubhouse for fleets sailing from there and under the tent located in front of the NBYC clubhouse for fleets sailing from there.

3.0 CHANGES TO THE SAILING INSTRUCTIONS

3.1 Any changes to the Sailing Instructions will be posted before 0830 on the day they will take effect, except that during a postponement ashore a change may be posted before the removal of the AP flag. Any change in the schedule of races will be posted by 1900 on the day before it takes effect.

4.0 SIGNALS MADE ASHORE

4.1 Signals made ashore will be displayed from the BYC flagpole for the fleets sailing from BYC or from the NBYC flagpole for the fleets sailing from NBYC.

4.2 When flag AP is displayed ashore, "1 minute" is replaced with "not less than 60 minutes" in Race Signal AP. This changes Race Signals.

5.0 SCHEDULE OF RACES

5.1 On Friday, the first warning signal for:

Class/Circle	Is scheduled for:
Bullseye Singlehanded Regatta	1000
All circles at NBYC except Orange	1030
Orange Circle at NBYC harbor start	1100
Orange Circle at NBYC	1200
Dick Fontaine Memorial Distance Race	1400
Blue Circle and H12's at BYC	1500

5.2 Saturday and Sunday, the warning signal for all circles sailing from BYC and NBYC, except Orange, is scheduled for 1030 hours.

5.3 On Saturday and Sunday, the Orange Circle will have a Harbor start at 10 AM and first warning signal each day at 1100 hours.

5.4 Except for Bullseyes, on Sunday, no first warning signal for a race will be made after 1400 hours. Bullseyes see Attachment B.

5.5 Flag A displayed, with no sound, while boats are finishing means "No more racing today".

6.0 RACING AREAS

6.1 Classes are assigned to racing areas defined below. See Attachment 1 for a chart illustrating the approximate locations for the BYC fleets and Attachment 2 for a chart illustrating the approximate locations for the NBYC fleets.

BYC Fleets

Circle (VHF Channel)	Classes	Approximate center of circle	Approximate distance from G5	Approximate Bearing from G5
Red (VHF 69)	Bullseyes H12's	41° 40' 22" N 070° 43' 35" W	0.75 nm	140°
	Bullseye Singlehanded Circle	41° 41' 06" N 070° 44' 09" W	0.3 nm	050°
Blue (VHF 71)	J/80, Shields	41° 39' 42" N 070° 42' 11" W	2.0 nm	140°

Yellow (VHF 72)	PHRF Race/Cruise, NEMA Multihulls	41° 38' 34" N 070° 43' 41" W	2.3 nm	184°
-----------------	---	---------------------------------	--------	------

NBYC Fleets

Circle (VHF Channel)	Classes	Approximate center of circle	Approximate distance from breakwater	Approximate Bearing from breakwater
Orange (VHF 78)	Lasers	41° 33.82 N 070 55.50 W	1 nm	170°
White (VHF 79)	505s, Etchells, F18	41° 33.25 N 071° 52.80 W	2.8 nm	120°

7.0 COURSES

7.1 For drop mark courses, no later than the warning signal, the race committee signal vessel will display the course designation, the approximate distance of the first leg and the approximate compass bearing of the first mark.

For example:

W4		CC3
1.2	or	1.2
235		235

7.2 The diagrams in Attachment 3 show the drop mark course configurations, including the approximate angles between legs, the order of rounding and the side on which they are to be rounded. Note that the diagrams illustrate starting and finishing lines that are separate from the rounding marks and include an offset mark at the windward mark.

7.3 The drop mark courses will be:

W Windward/Leeward, posted with the number of full legs, e.g.,

W4: Start – 1– 3– 1 – Finish (downwind)

or W3: Start – 1– 3 – Finish (upwind)

WO Windward/Leeward with and offset, posted with the number of full legs, e.g.,

WO4: Start – 1– offset - 3– 1 – offset - Finish (downwind)

or WO3: Start – 1– offset - 3 – Finish (upwind)

WOG Windward/Leeward with an offset mark and a gate, posted with the number of full legs, e.g.

W4: Start- 1 – offset - 3A/3B – 1 – offset - Finish (downwind)

CC Port Triangle and port triangle with windward/leeward option (leeward mark set to windward of signal boat), posted with full number of legs e.g.,

CC3: Start – 1– 2 – Finish (at signal boat)

CC5: Start – 1– 2 – 3 – 1 – Finish (at signal boat)

WMG Windward/Leeward, start and finish in the middle, posted with the number of full legs, e.g.,

WMG5: Start – 1 – offset – 3A/3B– 1 – offset – 3A/3B – Finish (upwind in the middle)

7.4. If only one leeward mark is set, it shall be rounded to port.

7.5 PHRF and NEMA multihulls may also sail courses using permanent marks. In that case, the race committee will post the marks of the course in order and the side on which each is to be left [P(ort) or S(tarboard)] on a white board on the signal boat. The descriptions and locations of the permanent marks are in Attachment 4.

8.0 MARKS

8.1 The drop marks for each racing area are described in Attachment 3.

9.0 THE START

9.1 Before racing each day, each boat shall check in by passing behind the signal boat and hailing her sail number until acknowledged by the race committee. PHRF boats and NEMA multihulls may also check in by hailing their race committee on VHF channel 72 and being acknowledged. Failure to check in will result in a scoring penalty equal to 20% more than the number of starters in that race

9.2 The starting line will be between a staff displaying an orange flag on the RC boat and the course side of the starting mark or a staff displaying an orange flag on the RC pin boat.

9.3 Boats whose warning signal has not been made shall avoid the starting area during the starting sequence for other races.

9.4 A boat that does not start within 4 minutes after her starting signal will be scored "Did Not Start" without a hearing. This changes RRS 63.1, A4.1 and A5.

9.5 Class flags, time limits, and finishing windows (see SI 14) are defined below:

<u>Circle</u>	<u>Class</u>	<u>Class Flag</u>	<u>Time Limit</u>	<u>Finishing Window</u>
Red	Bullseye	Class Insignia	90 minutes	30 minutes
	H12	Class Insignia	90 minutes	30 minutes
Blue	J/80	Class Insignia	90 minutes	20 minutes
	Shields	Class Insignia	90 minutes	20 minutes
Yellow	PHRF Race 1	Numeral Pennant 1	120 minutes	45 minutes
	PHRF Race 2	Numeral Pennant 2	120 minutes	45 minutes
	PHRF Cruise 1	Numeral Pennant 3	120 minutes	45 minutes
	NEMA Multihull	Numeral Pennant 4	120 minutes	45 minutes
Orange	Laser	Class Insignia	90 minutes	20 minutes
White	F 18's	Class Insignia	90 minutes	20 minutes
	Etchells	Class Insignia	90 minutes	20 minutes
	505	Class Insignia	90 minutes	20 minutes

Time limit and finishing window do not apply for the distance race. (See Attachment D Dick Fontaine Memorial Distance Race)

9.6 It is intended that classes will start the first race each day in the order shown above.

10.0 RECALLS

10.1 On the **Orange** racing areas, the race committee will attempt to hail OCS boats and boats subject to rule 30.1 after the starting signal.

10.2 On all other racing areas, the race committee will attempt to hail the sail numbers of OCS boats and boats subject to rule 30.1 after the starting signal. Such hails will be made on racing area's VHF channel. See 6.1.

10.3 The failure of a boat to hear the hail, the hail of some but not all OCS boats, or the untimely hail of some or all OCS boats shall not be grounds for granting redress. This changes RRS 62.1(a).

11.0 CHANGE OF THE NEXT LEG OF THE COURSE

- 11.1 To change the position of the next mark, the race committee will lay a new mark as described in Attachment 3 (or move the finishing line) and remove the original mark as soon as practicable. When the windward mark is changed, there will not be an offset mark. When in a subsequent change a new mark is replaced, it will be replaced by an original mark. The race committee may make minor adjustments to the gate without signaling a change.

12.0 THE FINISH

- 12.1 The finish line will be between a staff displaying an orange flag on a race committee boat and the course side of the nearby mark. For drop mark courses, the finish mark will be located as described in the diagram in Attachment 3.

13.0 PENALTIES

- 13.1 For all classes, Appendix V of the RRS applies.
- 13.2 For all PHRF and Multihull classes: The Scoring Penalty, RRS 44.3, will apply for penalties taken at the time of the incident. The penalty will be 10%. However, when a boat has broken a rule of Part 2 while in the zone around a mark other than a starting mark, her penalty will be 20%.

14.0 TIME LIMITS

- 14.1 The time limits are shown in 9.5.
- 14.2 The "finishing window" will open when the first boat that sails the course finishes. Boats still racing when the finishing window closes (see SI 10.4) will be scored "Time Limit Expired" without a hearing. See SI 16.3. This changes RRS 35, 63.1, A 4.2 and A5.
- 14.3 If one-design boats at the end of the fleet are delaying the start of another race, the race committee may terminate the race and score those boats in the places they would have finished if the finish order is clear.

15.0 PROTESTS, REDRESS AND ARBITRATION

- 15.1 A boat intending to protest alleging a breach of a rule of Part 2 shall report her intention, including the sail number(s) of the boat(s) she intends to protest, to the RC aboard the finish boat as soon as possible after finishing.
- 15.2 Protest forms will be available at the protest desks on the porch of the BYC clubhouse and in the NBYC clubhouse.
- 15.3 Requests for scoring review (including OCS) shall be filed within the protest time limit on forms available at the Protest Desk. Such requests will be reviewed by the race committee before being scheduled for a hearing by a protest committee. If unresolved, they shall be considered a timely Request for Redress.
- 15.4 Protests shall be delivered to the Protest Desk within 60 minutes after the circle's race committee finish boat docks. Protest time limits will be posted on the official notice board.
- 15.5 Notices will be posted no later than 20 minutes after the protest time limit for each circle to inform competitors of hearings in which they are parties or named as witnesses. Parties and witnesses should report to the protest desk. This posting constitutes the notification required by RRS 61.1(b) and 63.2.
- 15.6 Notices of protests by the race committee or protest committee will be posted to inform boats under RRS 61.1(b).
- 15.7 For all classes, Appendix T of the RRS applies.
- 15.8 If the race committee posts a list of boats scored OCS, ZFD, UFD, or BFD on the official notice board before the protest time limit for that circle, a request for redress based on such a posted score shall be made no later than one hour after the protest time limit. This changes RRS 62.2.
- 15.7 Boats are not permitted to protest alleging a breach of SI 17 or 18. This changes RRS 60.1(a). Penalties for these breaches may be less than disqualification if the protest committee so decides.

16.0 SCORING

- 16.1 One race shall be completed to constitute a series, except for the Bullseye National Championships. (See the Bullseye Supplement)

- 16.2 When fewer than five races have been completed, a boat's series score will be the total of her race scores. When five or more races have been completed, a boat's series score will be the total of her race scores excluding her worst score.
- 16.3 Time Limit Expired is defined as two places more than the number of boats who properly sailed the course and finished in the finishing window.
- 16.4 If the Dick Fontaine Memorial Distance Race for PHRF and NEMA Multihull classes is held, the scores will NOT be included in the overall scores for the Regatta.

17.0 SAFETY

- 17.1 **IF THERE IS A MEDICAL EMERGENCY, CONTACT ANY RC VESSEL, OR CALL THE HARBORMASTER (VHF CHANNEL 16).**
- 17.2 Competitors racing in the Laser and 505 classes shall wear a US Coast Guard approved personal floatation device (PFD) while on the water, except for brief periods while adding, adjusting or removing clothing. The PFD shall depend 100% on foam for floatation. No modifications of the PFD are permitted and the PFD shall be the appropriate size for the sailor. The PFD must be worn outside of all clothing except that a thin shirt may be worn over the PFD.
- 17.3 Competitors in the PHRF and NEMA Multihull classes shall wear a properly fastened US Coast Guard approved personal flotation device (PFD) while starting, without exception, and at all other times except when the captain directs that the devices may be set aside.
- 17.4 Competitors from outside the US may wear a PFD approved by their nation's certification authority to the extent permitted by international treaty.
- 17.5 A boat retiring from a race shall notify a race committee vessel before leaving the racing area, or, when that is impossible, the BYC or NBYC Office immediately after arriving ashore.

18.0 DISPOSAL OF TRASH

- 18.1 Boats shall not intentionally discharge trash into the water. The penalty for breaking this rule will be at the discretion of the protest committee. This changes RRS 55.

19.0 HAUL-OUT RESTRICTIONS

- 19.1 Keelboats shall not be hauled out during the regatta except with and according to the terms of the prior written permission of the Race Committee.

20.0 COURTESY BROADCASTS

- 20.1 Red, Blue, Yellow and White Race Committees will make courtesy broadcasts to inform competitors of the order of starting, postponements, general recalls, and other race-related information on their racing area channel. See 6.1
- 20.2 The absence, inaccuracy or untimeliness of such broadcasts shall not be grounds for granting redress. This changes RRS 62.1.

21.0 PRIZES

- 21.1 All classes will be awarded first through third place.
- 21.2 Prizes for the Dick Fontaine Memorial Distance Race will be awarded for first through third place if the race is held. **The award ceremony for the Distance Race will take place after racing on Friday.**
- 21.3 The Buzzards Bay Bowl will be awarded to a boat with the best all-around performance, as determined by the Race Committee.

SUPPLEMENT A
TO THE LASER SAILING INSTRUCTIONS

- A 1.0 SCHEDULE:** There will be a Skippers' Meeting on Friday at 1030 at the Knowles property on the west side of Padanaram Harbor on Smith Neck Road.
- A 2.0 EQUIPMENT:** Rig swapping will be allowed

SUPPLEMENT B
TO THE BULLSEYE SAILING INSTRUCTIONS

- B 1.0 SAILS:** The genoa jib will not be allowed.
- B 2.0 SCHEDULE:**
- B 2.1 0730, Friday August 3, 2018, Check in for Bullseye Singlehanded Competitors at BYC.
- B 2.2 0800, Friday, August 3, 2018, Skipper's Meeting for Singlehanded Championships under the tent at BYC
- B 2.2 There will be a competitor's meeting for the Bullseye Nationals at 0800 Saturday, August 4 under the tent at BYC.
- B 2.3 There will be no first warning signal after 1300 on Sunday August 5. This changes SI 5.4.
- B 3.0 NUMBER OF RACES FOR A SERIES:**
- B 3.1 For the Bullseye Singlehanded Championships, one race shall be completed to constitute a series.
- B 3.2 For the National Championships, three races shall be completed to constitute a series. This changes SI 16.1.
- B 4.0 SCORING:** A boat that leaves the racing area without notifying the race committee is subject to a 20% scoring penalty in the last race in which she finished. This changes RRS 35, 44.3(c), and A4 and SI 17.4.
- B 5.0 CREW, REPLACEMENT OF CREW OR EQUIPMENT:**
- B 5.1 The crew may number either two or three persons, but the number and identity of crew members must be maintained throughout the regatta. Substitution of skippers or crew during the regatta will not be allowed without prior approval of the race committee.
- B 5.2 Co-skippers will be allowed as long as both are members in good standing of the Bullseye Class Association.
- B 5.3 Changes to the sail inventory or equipment during the regatta will not be allowed without prior written approval of the race committee.
- B 6.0 MEASUREMENT:**
- B 6.1 All sails must have been measured and be clearly marked.
- B 6.2 All boats, sails and equipment will be subject to inspection at any time. Boats out of compliance are subject to penalty that may include disqualification from the regatta.
- B 7.0 PRIZES:**
- B 7.1 Prizes will be awarded for first through third place in the Bullseye Singlehanded Regatta.
- B 7.2 Prizes will be awarded to the skipper and crew for first through fifth place.
- B 7.3 Prizes will be awarded to first place skipper and crew for each race.
- B 7.4 Four perpetual trophies will be awarded:
- The E.L.Goodwin Bullseye National Trophy – awarded to the winner of the regatta.
 - The Beverly Trophy – awarded to the “most improved” skipper
 - The Rockport Trophy – Awarded to the highest finishing boat that is not a member of the host fleet
 - The Card Sound Filial Trophy – awarded to the highest finishing boat that has two generations of the same immediate family as skipper and crew.

SUPPLEMENT C**TO THE PHRF, NEMA MULTIHULL AND F18 SAILING INSTRUCTIONS****C 1.0 CLASS IDENTIFICATION:**

Each PHRF boat shall display the numeral pennant corresponding to her class flag (see SI 9.5) while racing. The pennant shall be attached to the boat's backstay (or starboard shroud if there is no backstay).

C 2.0 EQUIPMENT:

For all sprit boats, except NEMA multihulls, the bowsprit shall be retracted when not in the process of setting, flying, or taking down the spinnaker. When approaching a windward mark without the spinnaker set, the bowsprit shall not be extended until the bow of the boat passes the mark. The Scoring Penalty, RRS 44.3, will apply. The penalty will be 10%.

C 3.0 COURSES**For NEMA Multihulls and F18s only:**

In courses WO and WOG, the race committee will place a leeward mark approximately 0.5 nm to leeward of the start/finish area. Multihulls and F18s shall use this leeward mark and shall disregard Mark 3 or 3A/3B in the course diagrams.

**SUPPLEMENT D TO THE SAILING INSTRUCTIONS FOR
THE DICK FONTAINE MEMORIAL DISTANCE RACE
FOR ALL PHRF AND MULTIHULL BOATS**

- D 1.0 A distance race for PHRF Race, PHRF Cruise and NEMA multihull classes is scheduled for Friday, August 3. If it is impractical to sail a distance race in the expected weather conditions the Race Committee will signal a course from Attachment 2 of the Sailing Instructions.
- D 2.0 This race will NOT count in the overall results for the regatta if it is held.
- D 3.0 **The start** for all classes, including PHRF Cruise will be on the Yellow racing area. The starting line will be between the course side of a portable mark (designated as U) or a permanent mark at the port end and the staff from which an orange flag is displayed on the race committee signal boat.
- D 4.0 **The finish** line, unless the course is shortened, will be between the course side of the final mark of the course and the staff from which an orange flag is displayed on the race committee signal boat.
- D 5.0 The race committee will post the marks of the course in order and the side on which each is to be left P(ort) or S(tarboard) on a white board on the signal boat.
- D 6.0 Mark W will be a portable mark. The distance and bearing to this mark, if used, will be posted on the signal boat. Mark W will be used at the discretion of the race committee.
- D 7.0 A chart will be posted on the official notice board at BYC, showing the locations of each rounding mark. Possible marks of the course, with their approximate location and description are in Attachment 4 below.
- D 8.0 Competitors shall monitor VHF channel 72 while racing. The failure of a boat to hear the changes shall not be grounds for granting redress. This changes RRS 62.1(a).

SUPPLEMENT E TO THE SAILING INSTRUCTIONS FOR THE 505'S**E 1 THE START**

E 1.1 Races will be started using RRS 26.

E 1.2 Races will be started either by a gate start or a fixed line start. The race committee will attempt to use a gate start whenever reasonably possible.

E 1.3 The race committee signal boat will display the type of start no later than the warning signal. Flag G signifies a gate start (SI E 2). Flag F signifies a fixed line start (SI E 3).

E 1.4 To alert boats that a race will begin soon, an orange flag will be displayed, with one sound at least five minutes before a warning signal is displayed.

E 2 GATE START (FLAG G)

E 2.1 Prior to the warning signal, the race committee signal boat will display the time in seconds between the starting signal and the time at which the gate boat will stop at the starboard end of the starting line.

E 2.2 The race committee will appoint the pathfinder. The pathfinder will normally be the first boat 7th place or later in the previous race that is able to race and has not yet served as a pathfinder.

E 2.3 The sail number of the pathfinder will be posted on the official notice board for the first scheduled race of the day. For subsequent races each day, the sail number of the pathfinder will be posted on the race committee signal boat, as soon as practical after the completion of the previous race.

E 2.4 Prior to the preparatory signal the pathfinder shall report to the gate boat (displaying flag G and located near the race committee signal boat) and follow the race committee's instructions. If the pathfinder fails to do so, she will be disqualified without a hearing and shall be ineligible for any restart of that race. If the race is restarted that same day SI E 2.12 applies to her. This changes RRS 63.1.

E 2.5 Within 5 seconds after the starting signal: (1) the pathfinder will begin a close--hauled port tack from the port limit mark. (2) the gate boat will keep station close astern and slightly to leeward of the pathfinder.

E 2.6 The starting line (except for the pathfinder) will be between the port limit mark and the center of the stern of the gate boat.

E 2.7 All boats (except for the pathfinder) shall start on starboard tack after the pathfinder clears the port limit mark. RRS 29.1, Individual Recall, does not apply.

E 2.8 The pathfinder shall sail a close--hauled course until it is released by hail from the gate boat, after which the pathfinder has started, ceases to be a starting mark, and may continue or tack onto starboard tack.

E 2.9 After the release of the pathfinder, the gate boat will continue its course and speed until the gate has been opened for the period signaled in SI E 2.1. It will then stop, make a long sound signal, drift for one minute, and signal the close of the gate by lowering flag G with a short sound signal.

E 2.10 A boat that has not started at the close of the gate will be scored DNS without a hearing. This changes 63.1 and A5.

E 2.11 While approaching the line to start, a boat shall: (1) not cause the pathfinder or gate boat to alter course or speed, (2) not pass between the pathfinder and the gate boat, A boat that does so will be disqualified without a hearing and SI E 2.12 will apply. This changes RRS 63.1.

E 2.12 If a boat has been disqualified according to SI E 2.4 or E 2.11 and the race is restarted on the same day, her sail number shall be displayed on the race committee signal boat for at least 3 minutes prior to the new warning signal. A boat whose number has been displayed shall leave the starting area before the next warning signal; however, a boat breaking this rule may participate in the restarted race providing she advises the race committee prior to the warning signal that she intends to protest another boat and/or requests a redress in connection with the incident. If she does not then file a valid protest or request, or her protest is dismissed or she is not granted redress, she shall be scored a DNE for the race in question. This changes RRS 36, 62.2, 63.1 and Appendix A5.

E 3 FIXED LINE START (FLAG F)

E 3.1 The starting line will be between staffs displaying an orange flag on the race committee boats at each end of the line.

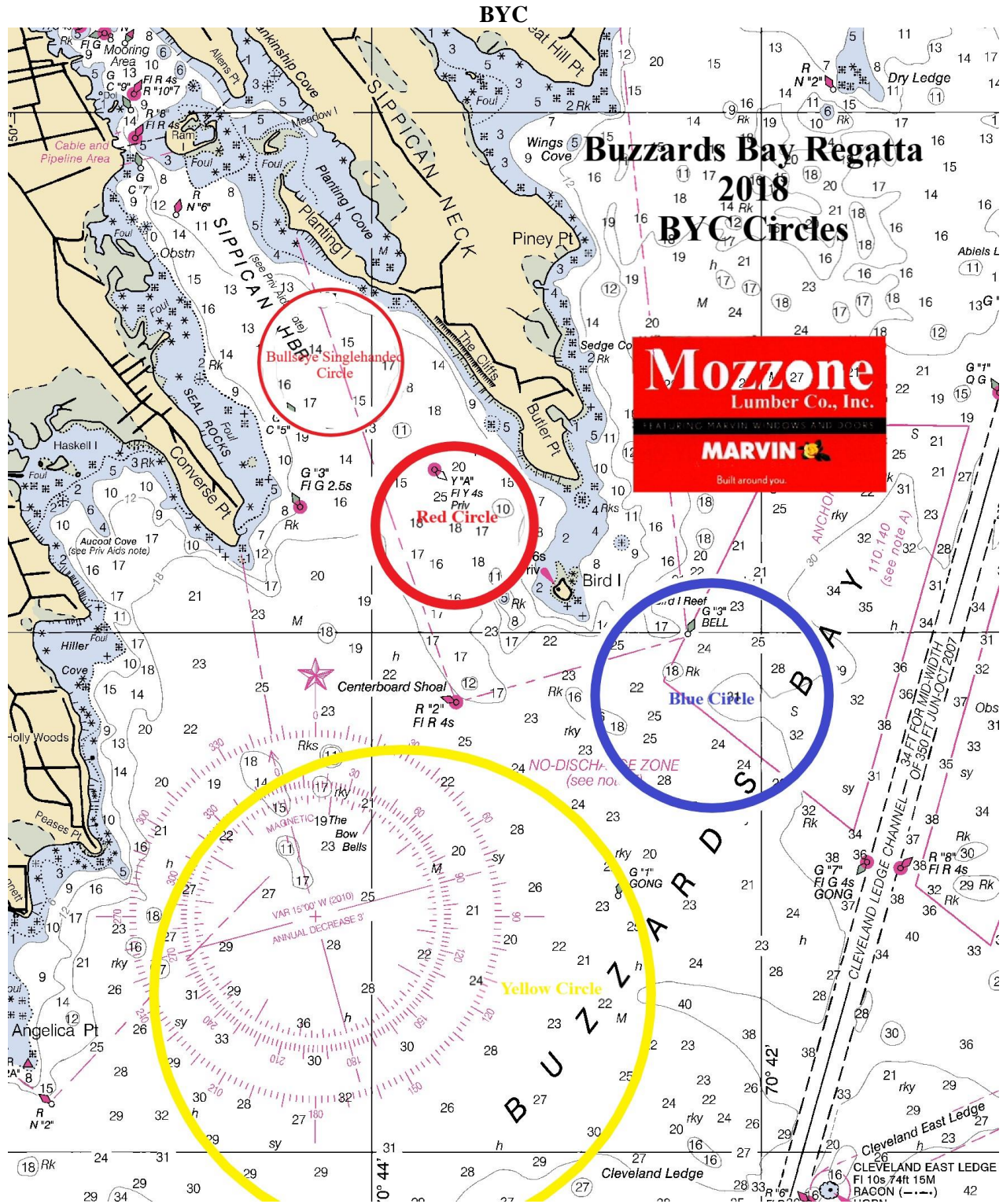
E 3.2 A buoy may be attached to the race committee signal boat anchor line just below keel depth. This buoy is considered part of the race committee's anchor line.

E 3.3 A boat starting later than 5 minutes after her starting signal will be scored DNS \without a hearing. This changes RRS A4.

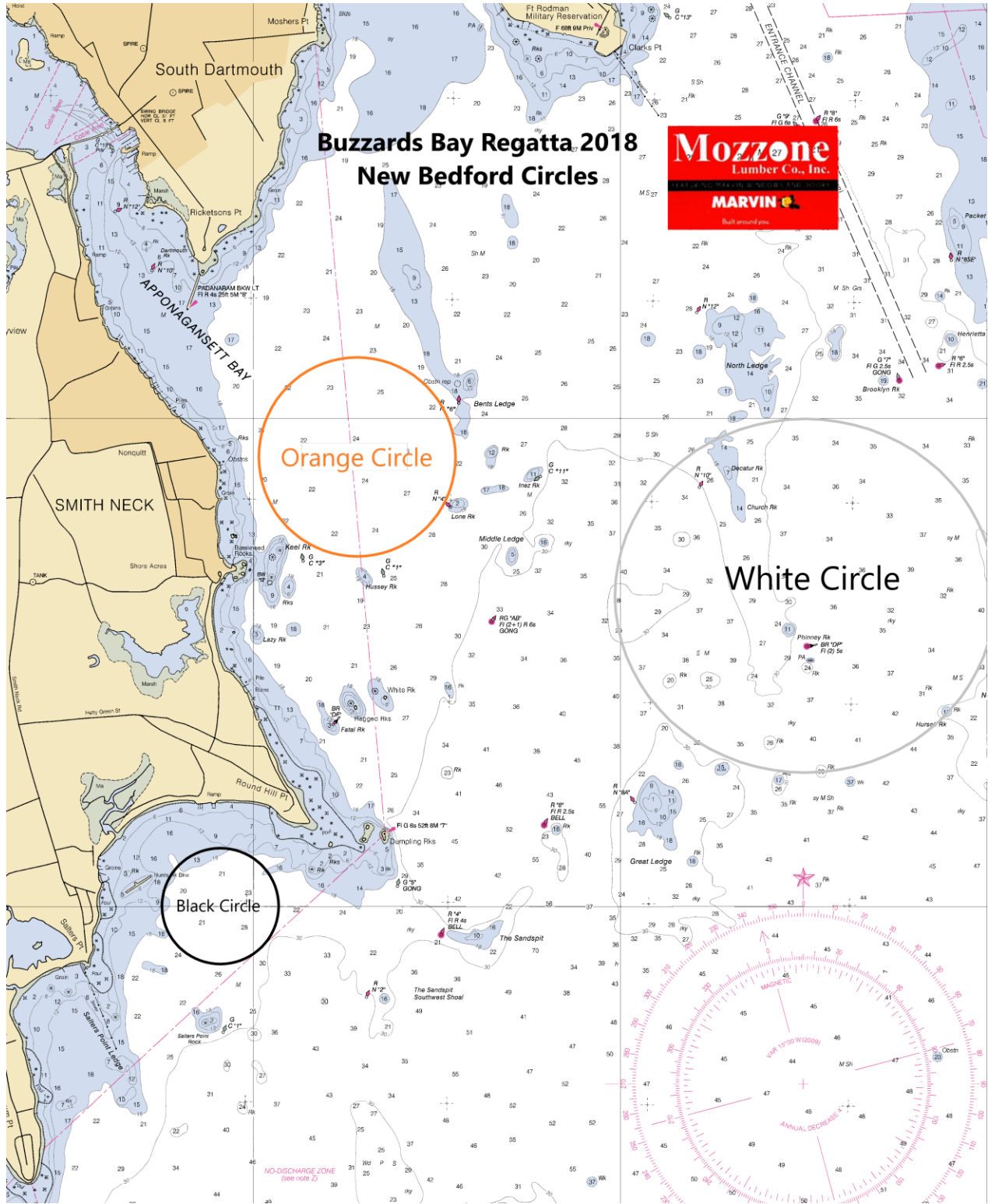
ATTACHMENTS:

1: Racing area locations, 2 pages	3: Mark descriptions, 1 page
2. Course diagrams, 1 page	4: Permanent mark locations for PHRF and NEMA multihull classes

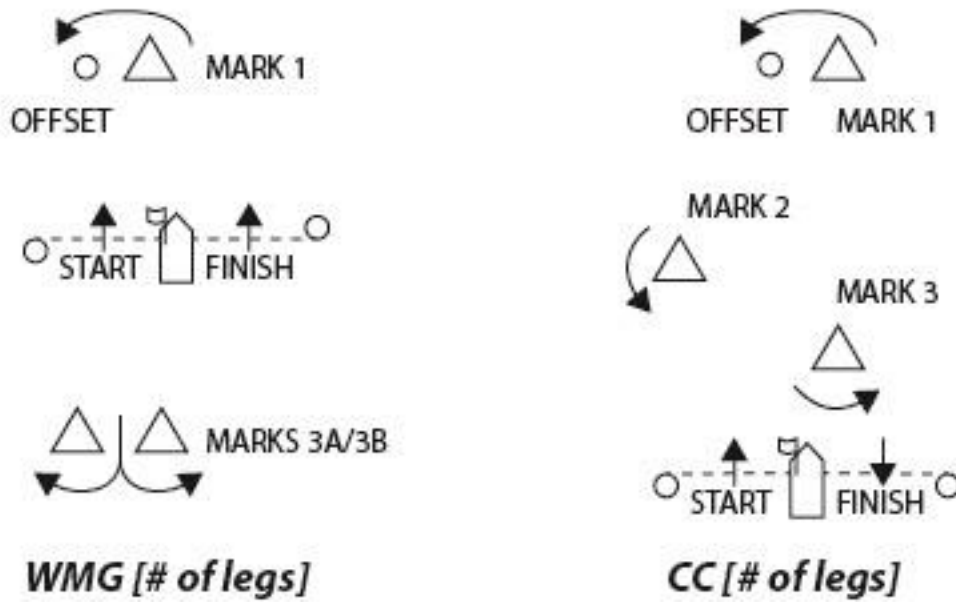
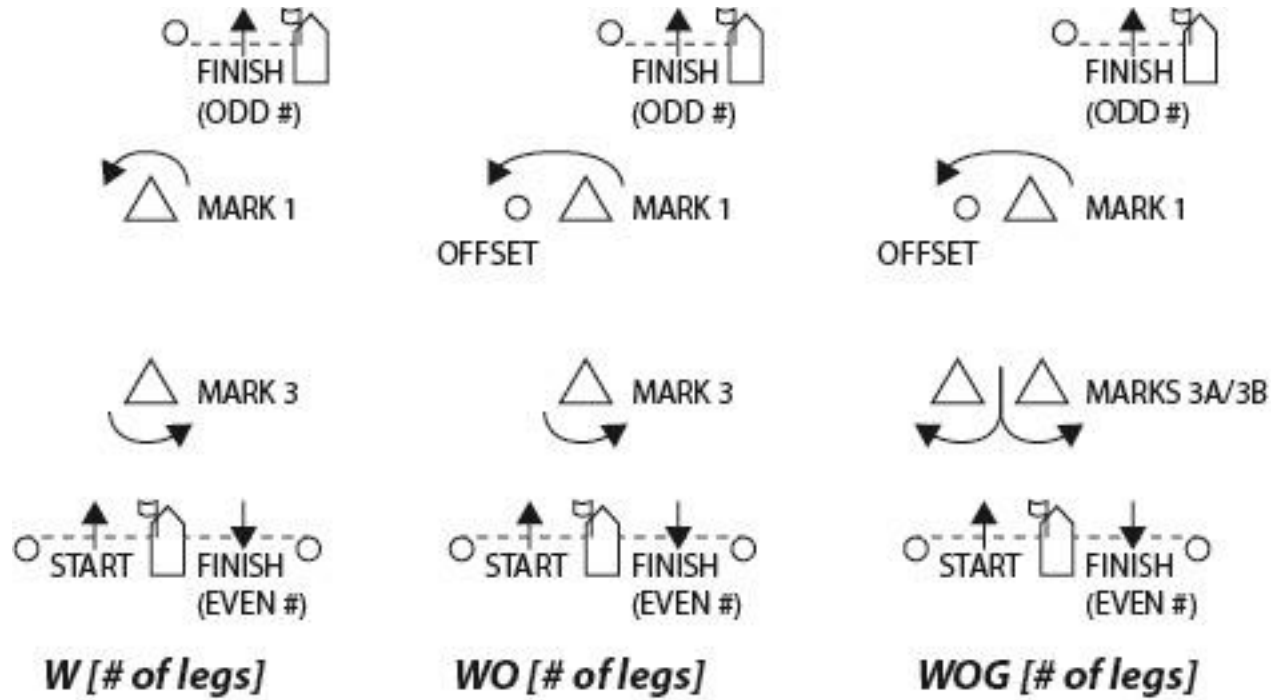
Buzzards Bay Regatta 2018
ATTACHMENT 1 – CIRCLE LOCATIONS



NBYC



Buzzards Bay Regatta 2018
SAILING INSTRUCTIONS
ATTACHMENT 2 – COURSE DIAGRAMS



Buzzards Bay Regatta 2018

ATTACHMENT 3 – MARK DESCRIPTIONS

FLEETS RACING FROM BYC

Racing Area	RED	BLUE	YELLOW
CLASSES	BULLSEYES/ H12'S	SHIELDS/J80'S/J24'S	PHRF RACE PHRF CRUISE MULTIHULLS
Start	Orange cylinder	Yellow cylinder	Orange cylinder
Original 1, 2, 3A/3B	Yellow tetrahedrons	Orange tetrahedrons	Yellow tetrahedrons
Offset	Red ball	Red ball	Red ball
Multihull Leeward 3			Orange tetrahedron
New 1, 3	Orange tetrahedron	Yellow tetrahedron	Orange tetrahedron
Finish	Orange cylinder	Yellow cylinder	Orange cylinder

FLEETS RACING FROM NBYC

Racing Area	WHITE	ORANGE
CLASSES	505's ETHELLES F 18'S	LASER
Start	Yellow tetrahedron	Yellow cylinder
Original 1, 2, 3, Gates	Orange tetrahedrons	Orange tetrahedrons
Offset	Red ball	Red ball
F18 Leeward 3	Orange tetrahedron	
New 1, 3	Yellow tetrahedron	Yellow tetrahedron
Finish	Yellow cylinder	Yellow tetrahedron

ATTACHMENT 4 - POSSIBLE BUOY LOCATIONS FOR THE DICK FONTAINE MEMORIAL RACE FOR ALL PHRF AND MULTIHULL BOATS

Mark	Description	Latitude	Longitude
3	Sippican Harbor Lighted Green Buoy "3" (Fl G)	N41 40.50	W70 44.40
A	BYC Yellow Can "A" Southwest of Butler Point	N41 40.433	W70 43.521
E	BYC Yellow Can "E" Southeast of Converse Point	N41 40.168	W70 44.454
F	BYC Yellow Can "F" South of Bird Island	N41 39.916	W70 43.026
G	Sippican Harbor Lighted Red Buoy "2" (Fl R), at Centerboard Shoal	N41 39.70	W70 43.60
H	BYC Yellow Can "H" at The Bow Bells, East of Point Connett	N41 39.204	W70 44.401
I	BYC Yellow Can, marked as "I" (replacing the Mattapoisett Harbor Red Nun "2" South of Angelica Point	N41 38.400	W70 45.360
J	Turning Mark to Leeward of Start/Finish Line	Portable Mark	
K	West Island Red Bell "2SE" (off chart)	N41 34.10	W70 48.80
L	Weepecket Rock Lighted Red Gong "8" (Fl R) (off chart)	N41 31.82	W70 43.43
M	Bird Island Green Bell "3" Southeast of Bird Island	N41 40.00	W70 42.37
N	BYC Yellow Can south of Bird Island	N41 38.860	W70 42.400
P	Alternate Finish Line Pin to Starboard of Signal Boat	Portable Mark	
Q	Hog Island Channel Lighted Green Buoy "1" (Qk Fl G) Southwest of Abiels Ledge	N41 40.93	W70 40.77
R	Cleveland Ledge Channel Lighted Green Gong "7" (Fl G) Northeast of Cleveland Light	N41 39.12	W70 41.45
S	Cleveland Ledge Channel Lighted Green Buoy "3" (Qk Fl G) Southwest of Cleveland Light	N41 37.33	W70 42.12
T	BYC Yellow Can "T" Southeast of Angelica Point	N41 38.108	W70 44.553
U	Pin End of Start/Finish Line to Port of Signal Boat	Portable Mark	
W	Windward Turning Mark at Bearing and Distance Posted on Signal Boat	Portable Mark	
X	BYC Yellow Can "X" East of Pease's Point	N41 39.258	W70 45.010
Y	BYC Yellow Can "Y" Southwest of the Cliffs	N41.40.812	W70 43.894
Z	Buzzards Bay Lighted Red Gong "10" (Fl R) Southeast of West Island (off chart)	N41 34.61	W70 43.25